

TNP113 EVACUATED TUBE PITCHING FRAME ASSEMBLY

The Evacuated Tube Pitching Frame is designed for use with evacuated tube collectors.

The TNP113 system utilises the lengths of anodised channel that are included in the manifold packaging as standard inclusions in addition to three vertical anodised aluminium up-right support legs and necessary cross bracing to support the evacuated tube system.

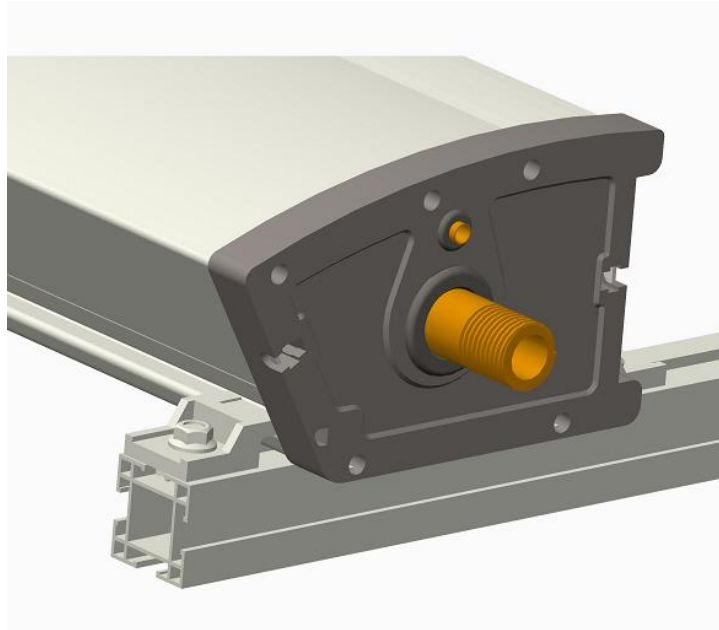
Assembly is straight forward as follows:

STEP 1



Fasten the ET upper manifold to the vertical supports using the Z-shaped brackets and fasteners included in the ET packaging. Ensure enough clearance is left to fasten both the top and the bottom of the manifold securely to the vertical supports (a total of six fasteners is provided).

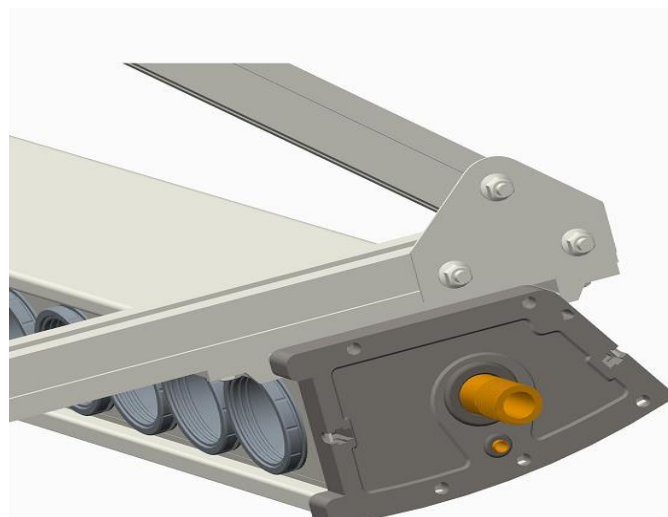
STEP 2



When both the top and bottom Z-Brackets are secured tightly to the three vertical up-rights, the manifold is prevented from movement.

Note that the 20mm MI fitting extends past the alignment of the vertical rail and that sensor ports are provided on both ends of the manifold for ease of installation.

STEP 3



Secure the three angled supports to the three vertical up-rights using the three joiner plates provided and stainless steel T-bolts and nuts provided with the pitching kit. Use the M8 x 16mm T-bolts for these three joining plates. Ensure all nuts are tightened securely.

STEP 4



With the upper and lower manifolds and the three angled supports securely fastened, it is time to stand the semi-completed assembly onto its feet.

Double check all connections at this point.

STEP 5



Fasten the three horizontal supports to the pitching frame using the M8 x 25mm T-Bolts supplied. The supports are supplied with the pitching frame kit as are the stainless steel T-bolts and nuts.

STEP 6



Fasten the four angled supports to the vertical up-rights of the pitching frame using the M8 x 25mm T-bolts and nuts provided. The supports are supplied with the pitching frame kit as are the stainless steel T-bolts and nuts. Note that the angled supports are also secured mid-length with a T-bolt and nut for extra support.

STEP 7



Finally, fasten the six pitching kit mounting feet to the vertical up-rights and angled manifold support system using the remaining M8 x 15mm T-bolts and nuts.

Double check to ensure all T-bolts are fully tightened and the frame is ready to be mounted into position prior to installation of the plumbing.

Please note that this pitching frame system is not intended to be used in cyclone rated areas. The responsibility of correctly fastening the system to the roof structure remains with the installer who must be a fully authorised person.

For installation of the evacuated tubes, please refer to Owner / Installer manual provided with the pump/controller or down-loadable from the Impact Solar website found at www.impact solar.com.au. This manual must be read in conjunction with the above assembly instructions and all provisions of this Owner / Installer manual apply to the entire plumbing installation including assembly of the pitching frame.

It is the responsibility of the installer to ensure compliance with all relevant building codes and regulations.

For any inquiries regarding this or any other SolarEast Australasia, please call 1300 668 886 or email sales@impact solar.com.au.