

H^{OP}ergy

Clean Energy Creating A Bright Future

THE PROFESSIONAL PV MOUNTING SYSTEMS

www.hopergy.com

COMPANY PROFILE

Xiamen Hopergy Photovoltaic Technology Co.,Ltd specializes in the research & developing,production, sales, engineering of PV mountings, solar systems. We provide innovative mounting solutions for any PV solar application including commercial, industrial, government, utility and residential applications. Our mounting system is designed to suit a wide range of PV solar panels and offers quality and strength. This mounting system significantly reduces the time required to install a solar energy system and is competitively priced. Professional integrators and installers from coast to coast rely on our product lines of high strength and easy to install mounting systems and enclosures.

Hopergy is focusing on meeting the huge demands from the public and improving advanced customized solar system solutions. Our obedience to the spirit of “professional, creative service” to maintain good relationship with our clients and keep long term business relationships with domestic and overseas customers.

Our flexibility, PV solar industry experience and manufacturing capabilities allow us to respond to customer's needs quickly and with precision. We are 100% committed to meeting our customer's needs and exceeding their expectations.

WHY HOPERGY?

- ◆ Hopergy is a professional supplier, specializing in PV mounting system. We have experienced engineers and strong production and processing capacity. Based on guaranteeing products high-quality, we ensure product quality from beginning and offer you cost-efficient and most competitive products.
- ◆ The connection of Hopergy aluminum rail and splice kit make the installation easier, flexible and convenient. It can improve the installation efficiently and save cost of installation.
- ◆ Using our splice kit to connect aluminum rails, the two openings of aluminum rail could make the splice kit assemble more flexible. This installation method ensure to use each tailings material sufficiently and economically, to make different length of rails extend unceasingly which reduce the wastage and the troubles of manufacturing and transporting the long rails.
- ◆ The closely cooperation of rail corrugated surface and hook corrugated surface increase friction and prevent sliding phenomena efficiently. The design of rail's closed loop ensure the intension of rail and reasonable strength distribution. The three openings of rail could use in conjunction with most of hooks in the present market and the fixation way is very flexible. The corrugated surface design between rails and splice kits increase friction of them effectively.
- ◆ Excellent Material Selection, we choose to use Aluminum 6005-T5 of all our aluminum products and stainless steel SUS304 of all our hooks, including bolts, nuts etc.
- ◆ Our designs are in compliance with many national and international standards.
- ◆ Our powerful production processing ability ensure us to offer leading competitive price and punctual delivery. We can supply most low-cost products within the shortest possible time. We can do customized according to different clients requirements, and provide OEM service.



PITCHED ROOF SOLUTION

Pitched Tile Roof Mounting System

Hopergy pitched tile roof mounting system is a roof-mounting solution suitable for most types of pitched and flat roofs. Using our innovative HOP Rail, rail splice kit and standard roof hooks, can be easily assembled and saved your work labor and time. The customized length eliminate the welding and cutting onsite to keep the strong structure and nice appearance.

Specification

Standard: AS/NZS 1170, Euro Code 8, DIN 1055, IBC 2006

Max Wind Speed: 55 m/s

Snow Load: 1.4KN/m²

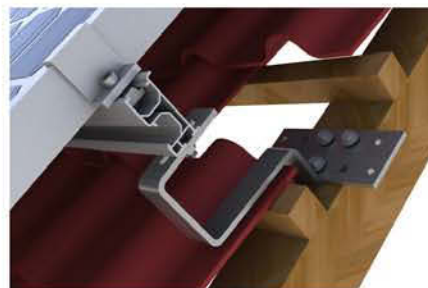
Material: Anodized Aluminum 6005-T5 & SUS 304

Warranty: 10 Years And 25 Years Service Life



Key Benefit

- ◆ Easy to install, The tilt-in module can be put into the extruded rail from all kinds of location, from residential and large commercial, right through to utility scale and can be high pre-assembly with the clamp to minimize the time and cost of installation.
- ◆ Durability: The material of the components is Aluminum 6005-T5, except for the nuts and hook is made of stainless steel, the connection between the rails is a reliable splice bar, which make the hole structure firmer, the wind resist can reach up to 55m/s, 25 years product life cycle of structure and the warranty is 10 years.
- ◆ Good Compatibility: Designed as a universal mounting system, our mounting system is compatible with most of the major framed PV modules on the market
- ◆ High Quality: Strict quality control cover the entire process from material selection and manufacturing to pre-construction ensures optimum life of our mounting system.



PITCHED ROOF SOLUTION



Tin Roof Mounting System

Hopergy Tin Roof mounting system is applied to install on the sheet metal roof with our HOP roof hooks, rails, rails splice kits can be easily-assembled and save your work labor and time.

Specification

Standard: AS/NZS 1170, Euro Code 8, DIN 1055, IBC 2006

Max Wind Speed: 55 m/s

Snow Load: 1.4KN/m²

Material: Anodized Aluminum 6005-T5 & SUS 304

Warranty: 10 Years And 25 Years Service Life



Key Benefit

- ◆ Easy to install, The tilt-in module can be put into the extruded rail from all kinds of location, from residential and large commercial, right through to utility scale and can be high pre-assembly with the clamp to minimize the time and cost of installation.
- ◆ Durability: The material of the components is Aluminum 6005-T5, except for the nuts and hook is made of stainless steel, the connection between the rails is a reliable splice bar, which makes the hole structure firmer, the wind resist can reach up to 55m/s, 25 years product life cycle of structure and the warranty is 10 years.
- ◆ Good Compatibility: Designed as a universal mounting system, our mounting system is compatible with most of the major framed PV modules on the market.
- ◆ High Quality: Strict quality control covers the entire process from material selection and manufacturing to pre-construction ensures optimum life of our mounting system.





PITCHED ROOF SOLUTION

Hop-Lok

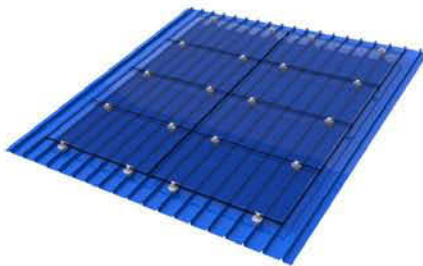
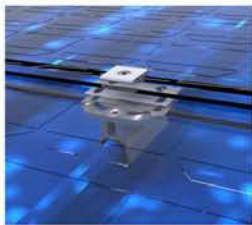
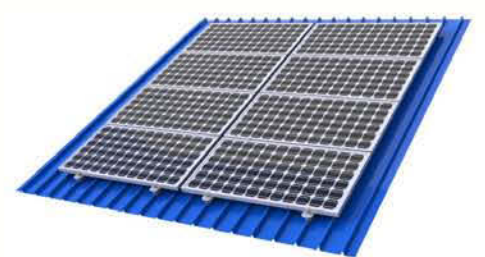
The Hopergy Hope-Lok interface provides an easy and inexpensive way to mount on Klip-Lok type roofs without penetrations. No rails were used in the installation and no holes were drilled through the roof. Solar modules were fixed with End Clamp and Inner Clamp directly to the Hopergy interface, which are secured firmly onto the roof rib. The interface for Klip-Lok type roofs is designed with EPDM rubber with the benefits of high corrosion resistance and with the maximum possible lifespan. It is compatible with Hopergy's tilt legs allowing tilt angles from 10 to 60 degree to maximize the system performance.



Hop-Lok

Specification

Roof Type: KlipLok 406, KlipLok 700, Speed Deck Ultra
Mounting Method: Clamping
Colour: Silver
Compatibility: Tilt Legs, L Feet, Inter Clamp, End Clamp
Material: Anodized Aluminum 6005-T5, EPDM rubber
Warranty: 10 Years And 25 Years Service Life



Hop EPDM Cable Clip

Hopergy EPDM Cable Clips are used for managing the wire of module well and tidy. The clips can be mounted to our Hopergy Rail and Hopergy HD rail by hand easily without any tools. Hopergy EPDM Cable Clip is made of EPDM rubber material with high corrosion resistance and with maximum possible lifespan than other plastic materials. It can be reused, unlike other zip ties.

Specification

Installation: Clamping
Colour: Black
Compatibility: Hopergy Standard Rail, Hopergy HD Rail
Material: EPDM Rubber
Warranty: 10 years



Hop EPDM Cable Clip

RAIL



HOP RAIL

Material: Anodized Aluminum 6005-T5

Color: Natural Or Customized

Item No.	Description
HOP-R-2560	HOP Rail with a standard length of 2560 mm Designed to mount 3 modules (width 808~826mm)
HOP-R-3405	HOP Rail with a standard length of 3405 mm Designed to mount 4 modules (width 808~826mm)
HOP-R-4200	HOP Rail with a standard length of 4200 mm Designed to mount 4 modules (width 990~996mm)
HOP-R-4400	HOP Rail with a standard length of 4400 mm Designed to mount 4 modules (width 1060~1065mm)
Customized Length	
HOP-Rail	Rail with standard length

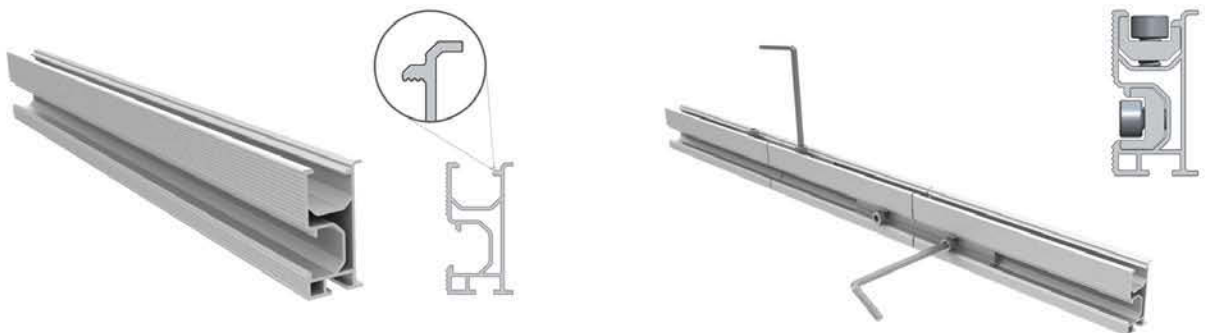


HOP RAIL SPLICE KIT

Material: Anodized Aluminum 6005-T5 & A2-70 Bolt

Item No.	Description
HOP-R-SPK	HOP standard splice kit connect two piece of rails

HOP-R-SPK



HOP-Rail





TILE ROOF HOOK

Tile Roof Hook

Material: Stainless Steel 304 & A2-70 Bolt

Various Hooks For Different Roof Claddings To Make The Installation Safer.

Item No.	Description
HOP-RH-1#	HOP Stainless Steel Hook 1#
HOP-RH-2#	HOP Stainless Steel Hook 2#
HOP-RH-3#	HOP Stainless Steel Hook 3#
HOP-RH-4#	HOP Stainless Steel Hook 4#
HOP-RH-5#	HOP Stainless Steel Hook 5#
HOP-RH-6#	HOP Stainless Steel Hook 6#
HOP-RH-7#	HOP Stainless Steel Hook 7#
HOP-RH-8#	HOP Stainless Steel Hook 8#
HOP-RH-9#	HOP Stainless Steel Hook 9#
HOP-RH-10#	HOP Stainless Steel Hook 10#
HOP-RH-11#	HOP Stainless Steel Hook 11#
HOP-RH-12#	HOP Stainless Steel Hook 12#-135mm
HOP-RH-13#	HOP Stainless Steel Hook 13#-165mm
HOP-RH-14#	HOP Stainless Steel Hook 14#-195mm



HOP-RH-1#

HOP-RH-2#



HOP-RH-3#

HOP-RH-4#



HOP-RH-5#

HOP-RH-6#



HOP-RH-7#



HOP-RH-8#



HOP-RH-9#



HOP-RH-10#



HOP-RH-11#



HOP-RH-12#



HOP-RH-13#



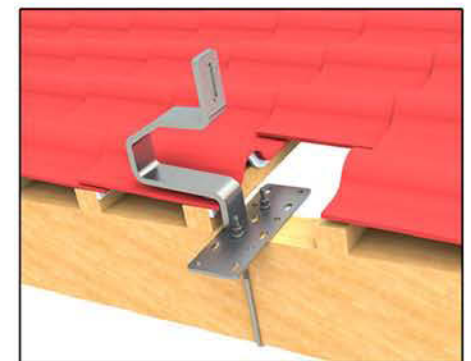
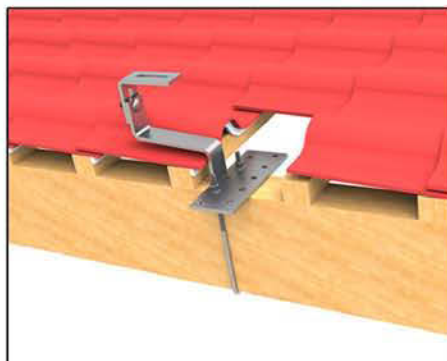
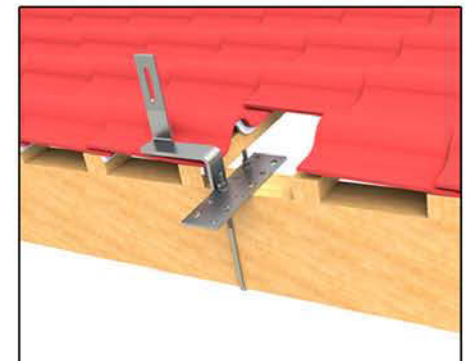
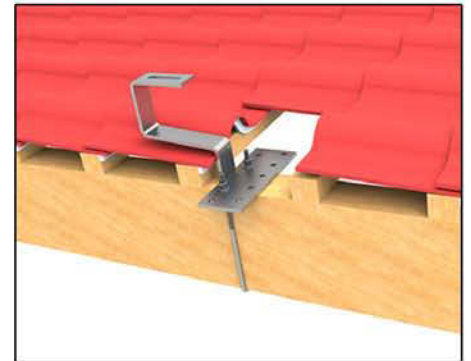
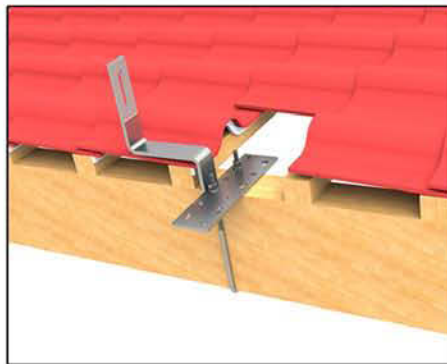
HOP-RH-14#

TILE ROOF HOOK



HOP U-Bracket

Using HOP U-Bracket to fix hooks onto beam, which is far different from using screws fixed mode, it can protect roof beam well. Our professional engineer design U-bracket according to different beam dimension to make our U-bracket adjust freely. Hopergy U-Bracket is applicable to use in all rafters of Australian Building.





TIN ROOF HOOK & CLAMP

Tin Roof Hook

Material: Anodized Aluminum 6005-T5 & Stainless Steel 304 & A2-70 Bolt

Item No.	Description
HOP-TH-L	Aluminum Tin Interface Hook L Feet, Fix Rail To Tin Roof
HOP-TH-T	Aluminum Tin Interface Hook T Feet, Fix Rail To Tin Roof
HOP-TH-1#	HOP Stainless Steel Tin Roof Hook 1#
HOP-TH-2#	HOP Stainless Steel Tin Roof Hook 2#
HOP-TH-3#	HOP Stainless Steel Tin Roof Hook 3#
HOP-TH-M10	Double Threaded Screw M10*200mm



HOP-TH-L



HOP-TH-T



HOP-TH-M10

HOP Clamp

Material: Anodized Aluminum 6005-T5 & A2-70 Bolt

Item No.	Description
HOP-ICK-35	HOP Inner Clamp Kit 35mm
HOP-ICK-40	HOP Inner Clamp Kit 40mm
HOP-ICK-46	HOP Inner Clamp Kit 46mm
HOP-ICK-50	HOP Inner Clamp Kit 50mm
HOP-ECK-35	HOP End Clamp Kit 35mm
HOP-ECK-40	HOP End Clamp Kit 40mm
HOP-ECK-46	HOP End Clamp Kit 46mm
HOP-ECK-50	HOP End Clamp Kit 50mm



HOP-TH-1#



HOP-TH-2#



HOP-TH-3#



HOP-ICK



HOP-ECK

ADJUSTABLE MOUNTING SYSTEM



Adjustable Mounting System

Adjustable mounting system can be adjusted to a certain angle such as 10-15 degree, 15-30 degree, 30-60 degree for your requirements. The Extruded Aluminum rail, tilt-in module, clamp kit and adjustable legs are highly assembled and to save time, cost-efficient to install.

Specification

Standard: AS/NZS 1170, Euro Code 8, DIN 1055, IBC 2006

Max Wind Speed: 55 m/s

Snow Load: 1.4KN/m²

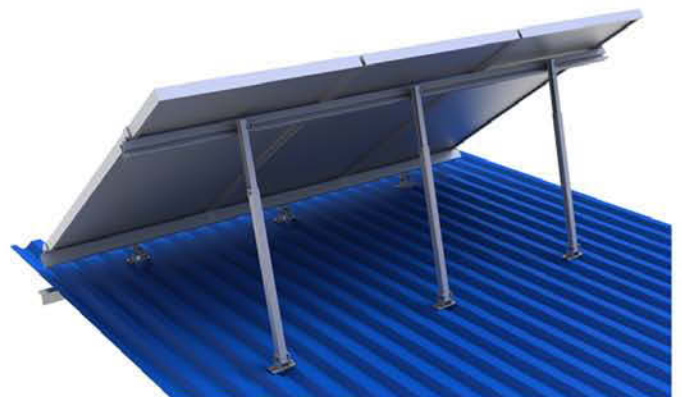
Material: Anodized Aluminum 6005-T5

Warranty: 10 Years And 25 Years Service Life



Key Benefit

- ◆ Easy to install, The tilt-in module can be put into the extruded rail from all kinds of location, from residential and large commercial, right through to utility scale and can be high pre-assembly with the clamp to minimize the time and cost of installation.
- ◆ Durability: The material of the components is Aluminum 6005-T5, except for the nuts is made of stainless steel, the connection between the rails is a reliable splice bar, which make the hole structure firmer, the wind resist can reach up to 55m/s, 25 years product life cycle of structure and the warranty is 10 years.
- ◆ Good Compatibility: Designed as a universal mounting system, our mounting system is compatible with most of the major framed PV modules on the market.
- ◆ High Quality: Strict quality control cover the entire process from material selection and manufacturing to pre-construction ensures optimum life of our mounting system.





ADJUSTABLE ROOF MOUNTING SYSTEM

HOP ADJUSTABLE ROOF REAR SUPPORT LEG

Material: Anodized Aluminum 6005-T5 & Stainless Steel 304 & A2-70 Bolt

Item No.	Description
HOP-AD-RL-1	Adjustable Tin Roof Rear Support Leg 10-15degree
HOP-AD-RL-2	Adjustable Tin Roof Rear Support Leg 15-30degree
HOP-AD-RL-3	Adjustable Tin Roof Rear Support Leg 30-60degree

HOP ADJUSTABLE ROOF FRONT SUPPORT LEG

Material: Anodized Aluminum 6005-T5 & Stainless Steel 304 & A2-70 Bolt

Highly Pre-assembly

Item No.	Description
HOP-AD-FL	Adjustable Tin Roof Front Support Leg, Designed To Accomodate To Various Tilt Angles



HOP-AD-FL



HOP-AD-RL

TRIPOD MOUNTING SYSTEM



Tripod Mounting System

Hopergy tripod mounting system is applicable to install the solar panels to tilt a certain angle such as 15-30 degree to get the most sunlight. This mounting system uses a stable triangle structure to joint our rail and clamp to mount the solar panels. We can also do customized according to different customers requirements.

Technical Parameter

Standard: AS/NZS 1170, Euro Code 8, DIN 1055, IBC 2006

Max Wind Speed: 55 m/s

Snow Load: 1.4KN/m²

Material: Anodized Aluminum 6005-T5 & SUS 304

Warranty: 10 Years And 25 Years Service Life



Key Benefit

- ◆ Easy to install. The tilt-in module can be put into the extruded rail from all kinds of location, from residential and large commercial, right through to utility scale and can be high pre-assembly with the clamp to minimize the time and cost of installation.
- ◆ Durability: The material of the components is Aluminum 6005-T5, except for the nuts is made of stainless steel the connection between the rails is a reliable splice bar, which make the hole structure firmer, the wind resist can reach upto 55m/s, 25 years product life cycle of structure and the warranty is 10 years. versal mounting system, our mounting system is compatible with most of the major framed PV modules on the market.
- ◆ Good Compatibility: Designed as a universal mounting system, our mounting system is compatible with most of the major framed PV modules on the market.
- ◆ High Quality: Strict quality control cover the entire process from material selection and manufacturing to pre-construction ensures optimum life of our mounting system.





Flat ROOF ADJUSTABLE MOUNTING SYSTEM

Flat Roof Adjustable Mounting System

Flat roof adjustable mounting system can be fixable or adjust to a certain degree such as 15-30 degree, We can also do customized according to different customers requirements.

Specification

Standard: AS/NZS 1170, Euro Code 8, DIN 1055, IBC 2006

Max Wind Speed: 55 m/s

Snow Load: 1.4KN/m²

Material: Anodized Aluminum 6005-T5 & SUS 304

Warranty: 10 Years And 25 Years Service Life

Key Benefit

- ◆ Easy to install. The tilt-in module can be put into the extruded rail from all kinds of location, from residential and large commercial, right through to utility scale and can be high pre-assembly with the clamp to minimize the time and cost of installation.
- ◆ Durability: The material of the components is Aluminum 6005-T5, except for the nuts and made of stainless steel, the connection between the rails is a reliable splice bar, which make the hole structure firmer, the wind resist can reach upto 55m/s, 25 years product life cycle of structure and the warranty is 10 years.
- ◆ Good Compatibility: Designed as a universal mounting system, our mounting system is compatible with most of the major framed PV modules on the market.
- ◆ High Quality: Strict quality control cover the entire process from material selection and manufacturing to pre-construction ensures optimum life of our mounting system.



POLE MOUNTING SYSTEM



Pole Mounting System

Hopergy Pole mounting system is designed to mount 4,6,8 or 10 panels each pole which delivers effective,flexible and long-term durable. Use our Pole mount, Rail and clamps highly pre-assembly ensure easy to install for saving time and amount of labor.Each Pole Mounting system can be adjusted to five angle for fixing which is 10 degree, 20 degree, 30 degree, 40 degree, 50 degree.

Technical Parameter

Standard: AS/NZS 1170, Euro Code 8, DIN 1055, IBC 2006

Max Wind Speed: 55 m/s

Snow Load: 1.4KN/m²

Material: Anodized Aluminum & SUS 304 & Hot Galvanized Steel Q 235

Warranty: 10 Years And 25 Years Service Life



Direct Embedded



Anchor Bolt Fixed



Item No.	Description
HOP-PM-04	Designed to mount 4 panels
HOP-PM-06	Designed to mount 6 panels
HOP-PM-08	Designed to mount 8 panels
HOP-PM-10	Designed to mount 10 panels

Key Benefit

- ◆ Easy to install. The tilt-in module can be put into the extruded rail from all kinds of location, from residential and large commercial, right through to utility scale and can be high pre-assembly with the clamp to minimize the time and cost of installation. The U bolt with the cap can fix the pipe easy and quick.
- ◆ Durability: The material of the components is Aluminum 6005-T5, except for the nuts is made of stainless steel. Using galvanized tube fix with the ground, material is Q235, surface treatment is hot-galvanized, the thickness of film more than 80 μm, which ensure products quality. The connection between the rails is a reliable splice bar, which make the hole structure firmer, the wind resist can reach upto 55m/s, 25 years product life cycle of structure and the warranty is 10 years.
- ◆ Good Compatibility: Designed as a universal mounting system, our mounting system is compatible with most of the major framed PV modules on the market.
- ◆ High Quality: Strict quality control cover the entire process from material selection and manufacturing to pre-construction ensures optimum life of our mounting system.



GROUND MOUNTING SOLUTION

Ground Mounting System

Hopergy Ground mounting system is applicable to use in a large PV system which includes from residential and commercial opening areas.

Specification

Standard: AS/NZS 1170, Euro Code 8, DIN 1055, IBC 2006

Max Wind Speed: 55 m/s

Snow Load: 1.4KN/m²

Material: Anodized Aluminum & SUS 304 & Hot Galvanized Steel Q 235

Warranty: 10 Years And 25 Years Service Life

Key Benefit

- ◆ Easy to install. The tilt-in module can be put into the extruded rail from all kinds of location, from residential and large commercial, right through to utility scale and can be high pre-assembly with the clamp to minimize the time and cost of installation. The U bolt with the cap can fix the pipe easy and quick.
- ◆ Durability: The material of the components is Aluminum 6005-T5, except for the nuts is made of stainless steel. Using galvanized tube fix with the ground, material is Q235, surface treatment is hot-galvanized, the thickness of film more than 80µm, which ensure products quality. The connection between the rails is a reliable splice bar, which make the hole structure firmer, the wind resist can reach upto 55m/s, 25 years product life cycle of structure and the warranty is 10 years.
- ◆ Good Compatibility: Designed as a universal mounting system, our mounting system is compatible with most of the major framed PV modules on the market.
- ◆ High Quality: Strict quality control cover the entire process from material selection and manufacturing to pre-construction ensures optimum life of our mounting system.



Anchor Bolt Fixed



Direct Embedded

Item No.	Description
HP-RP	Using galvanized tube fix with the ground, material is Q235, surface treatment is hot zinc, the thickness of film more than 80µm
HP-ST	
HOP-STC-A	The steel Cap connect the vertical pipe, cross pipe and the rectangular tube
HOP-STC-B	
HOP-SK	Use U bolt to connect the pipe with rail



HP-RP



HP-ST



HOP-STC-A



HOP-STC-B



HOP-SK

GROUND MOUNTING SOLUTION



Ground Mounting System II

Hopergy Ground mounting system II is a pre-assembled ground mount system suitable for large commercial and utility scale installations. By using high quality engineered components, Hopergy Ground mounting system II saves developers, operators and installers time and money when delivering large scale projects. The products suitable for installations on uneven ground.



Specification

Standard: AS/NZS 1170, Euro Code 8, DIN 1055, IBC 2006
Max Wind Speed: 55 m/s
Snow Load: 1.4KN/m²
Material: Anodized Aluminum & SUS 304 & Hot Galvanized Steel Q 235
Pile Driving Depth: 1500-2000mm
Soil Condition: Non-Sandy
Warranty: 10 Years And 25 Years Service Life



Key Benefit

- ◆ Easy to Install. Driven pole technology eliminates the need for pre-made concrete foundations, reducing the construction lead time and labour costs of large scale projects.
- ◆ Versatile Application. Ground mounting system II can be applied to meet various engineering requirements. In-field adjustable brackets can greatly reduce the workload of initial design and site preparation.
- ◆ Excellent Adaptability. With engineered steel components and a high quality surfacing system, ground mounting system II can withstand harsh environments.
- ◆ Assembly Flexibility. The horizontal and vertical angle along with the dislocation of the pole allows for adjustments during installation.
- ◆ Cost Reduction. The pre-assembled parts of ground mounting system II allow quick installation and therefore save you on labour costs.
- ◆ Durability: The material of the components is Aluminum 6005-T5, except for the nuts is made of stainless steel. Using galvanized tube fix with the ground, material is Q235, surface treatment is hot-galvanized, the thickness of film more than 80µm, which ensure products quality. The connection between the rails is a reliable splice bar, which make the hole structure firmer, the wind resist can reach upto 55m/s, 25 years product life cycle of structure and the warranty is 10 years.
- ◆ Good Compatibility: Designed as a universal mounting system, our ground mounting system II is compatible with most of the major framed PV modules on the market.
- ◆ High Quality: Strict quality control cover the entire process from material selection and manufacturing to pre-construction ensures optimum life of our mounting system.





GROUND MOUNTING SOLUTION

Ground Mounting System III

Hopergy Ground mounting system III is applicable to use in a medium-scale PV system which includes from residential and commercial opening areas, it's not only used in ground but also used on the flat roof.

Specification

Standard: AS/NZS 1170, Euro Code 8, DIN 1055, IBC 2006

Max Wind Speed: 55 m/s

Snow Load: 1.4KN/m²

Material: Anodized Aluminum & SUS 304 & Hot Galvanized Steel Q 235

Warranty: 10 Years And 25 Years Service Life



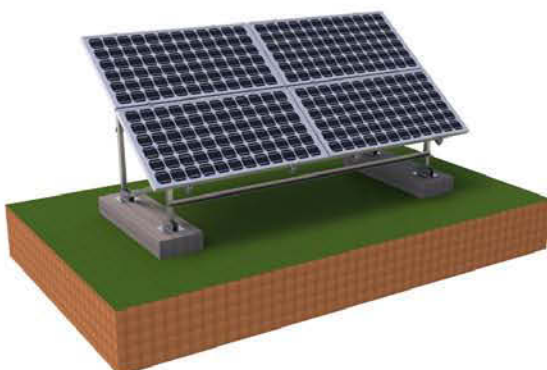
Key Benefit

◆ **Easy to install:** The tilt-in module can be put into the extruded rail from all kinds of location, from residential and medium-scale PV system, right through to utility scale and can be high pre-assembly with the clamp to minimize the time and cost of installation. The U bolt with the cap can fix the pipe easy and quick.

◆ **Durability:** The material of the components is aluminum 6005-T5, except for the nuts is made of stainless steel. Using square steel tube fix with the ground, material is Q235, surface treatment is hot-galvanized, the thickness of film more than 80μm, which ensure products quality. The connection between the rails is a reliable splice bar, which make the hole structure firmer, the wind resist can reach upto 55m/s, 25 years product life cycle of structure and the warranty is 10 years.

◆ **Good Compatibility:** Designed as a universal mounting system, our mounting system is compatible with most of the major framed PV modules on the market.

◆ **High Quality:** Strict quality control cover the entire process from material selection and manufacturing to pre-construction ensures optimum life of our mounting system.



GROUND MOUNTING SOLUTION



Ground Mounting System IV

Hopergy's Ground Mounting System IV is a pre-assembled ground mount system suitable for large scale commercial and utility scale installations. Ground Mounting System IV has been developed to fit all PV modules. Using high quality engineered components Ground Mounting System IV saves developers and installers time and money when delivering large scale projects.

Specification

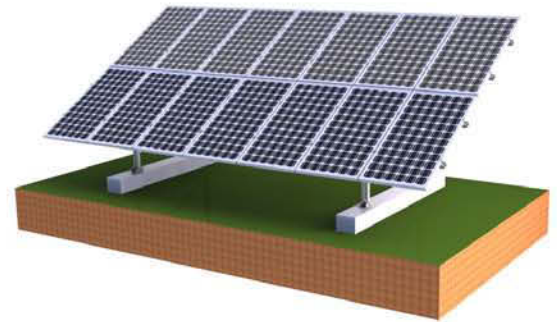
Standard: AS/NZS 1170, Euro Code 8, DIN 1055, IBC 2006

Max Wind Speed: 55 m/s

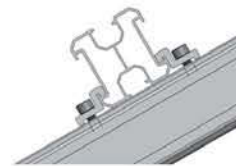
Snow Load: 1.4KN/m²

Material: Anodized Aluminum & SUS 304

Warranty: 10 Years And 25 Years Service Life



HD Rail

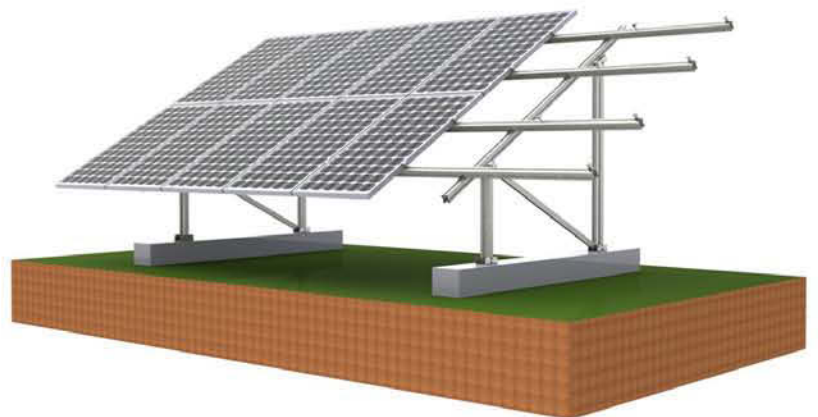


Section

Using the special splice kits to connect Hopergy's aluminium HD rail makes installation easier, more flexible and convenient. HD Rails can be extended indefinitely improving efficiency, minimising wastage and reducing the overall cost of installation.



pre-assembled Leg





EARTHING SYSTEM

Hopergy earthing system is designed to prevent lightning strikes. It is applicable to use in a large PV system which includes from residential and commercial opening areas.

HOP Earthing Lug

Material: Aluminum 6005-T5 & SUS 304

Item No.	Description
HOP-ELG	Used with copper wires to provide a continuous ground on solar PV systems

HOP Earthing Clip

Material: Stainless Steel SUS304

Item No.	Description
HOP-ECL	Used to bond solar PV modules to mounting structures and create an electrical path to ground

HOP Bonding Jumper

Material: Copper

Item No.	Description
HOP-EBJ	Used to create an electrical connection between rails



HOP-ELG



HOP-EBJ

Key Benefit

- ◆ Easy to install. The earthing system can be installed on flat roof or ground. It is applicable to use in a large PV system which includes from residential and commercial opening areas. The structure can be highly pre-assembly with our rail and clamps to save the time and cost efficient to install.
- ◆ Durability: With all structural components consisted of high class stainless steel, it is designed for twenty years service life and ten years warranty.
- ◆ Good Compatibility: Designed as a universal mounting system, our mounting system is compatible with most of the major framed PV modules on the market.
- ◆ High Quality: Strict quality control cover the entire process from material selection and manufacturing to pre-construction ensures optimum life of our mounting system.



HOP-ECL-A



HOP-ECL-B









HOP-ECL-C



SOLAR CONNECTOR CABLE



Solar Connector Cable

Picture	Name	Type	MOQ	Weight
	MC4 solar connector	RO-1	1000SET	23g/SET
			5000SET	
			10000SET	
	MC4 branch solar connector	RO-1T	1000SET	112g/SET
			5000SET	
			10000SET	
	MC4 solar connector with 1 meter 4mm ² cable assemblies	RO-1A	1000SET	94g/SET
			5000SET	
			10000SET	
	MC4 PV panel connector	RO-1P	1000SET	22g/SET
			5000SET	
			10000SET	
	MC4 Y branch solar connector	RO-1Y	1000SET	125g/SET
			5000SET	
			10000SET	
	MC3 solar connector	RO-2	1000SET	13g/SET
			5000SET	
			10000SET	



SOLAR CONNECTOR CABLE

Solar Connector Cable

Picture	Name	Type	MOQ	Weight
	MC3 T branch solar connector	RO-2T	1000SET	58g/SET
			5000SET	
			10000SET	
	MC3 solar connector with 1 meter 4mm ² cable assemblies	RO-2A	1000SET	130g/SET
			5000SET	
			10000SET	
	MC3 PV panel connector	RO-2P	1000SET	23g/SET
			5000SET	
			10000SET	
	MC3 Y branch connector	RO-2Y	1000SET	102g/SET
			5000SET	
			10000SET	
	Tyco solar connector	02-C	1000SET	18g/SET
			5000SET	
			10000SET	
	Solar cable	2.5mm ²	1000SET	51g/meter
			5000SET	
			10000SET	
		4mm ²	1000SET	72g/meter
			5000SET	
			10000SET	
		6mm ²	1000SET	95g/meter
			5000SET	
			10000SET	



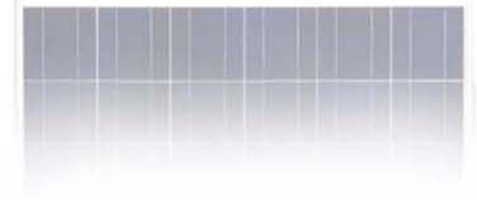
SL230CE - 30P



SL230CE - 30P

Electrical Data

Maximum Power (W)	230W
Optimum Power Voltage (Vmp)	30.36V
Optimum Operating Current (Imp)	7.58A
Open Circuit Voltage (Voc)	36.42V
Short Circuit Current (Isc)	8.11A
Cell Efficiency (%)	15.75%
Module Efficiency (%)	14.17%
Tolerance Wattage (e.g. +/-3%)	±3%
NOCT	47°C +/-2°C



SL230CE-30P



Benefits

- ◆ High efficiency solar cells with high transmission and textured glass are delivering high efficiency for modules;
- ◆ Bypass diode minimizes the power drop caused by shade;
- ◆ Tempered glass, EVA resin, and weatherproof film, plus aluminum frame for extended outdoor use;
- ◆ Modules independently tested to ensure conformance with certification and regulatory standards;
- ◆ Manufacturing facility certified to ISO 9001 quality management system standards;

Temperature Coefficients

Temperature Coefficients of Isc (%)°C	+0.04
Temperature Coefficients of Voc (%)°C	-0.38
Temperature Coefficients of Pm (%)°C	-0.47
Temperature Coefficients of Im (%)°C	+0.04
Temperature Coefficients of Vm (%)°C	-0.38

Applications

- ◆ On - grid residential roof - tops
- ◆ On - grid commercial / industrial roof - tops
- ◆ Solar power stations
- ◆ Other on - grid applications



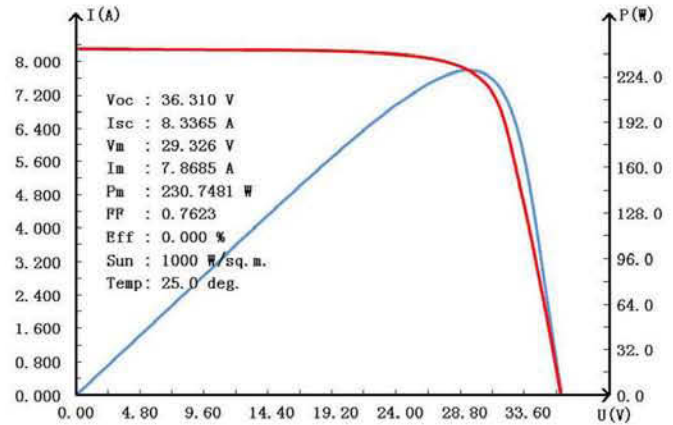


SL230CE - 30P

Components & Mechanical Date

Solar Cell	156*156 Poly
Number Of Cell (pcs)	6*10
Size Of Module (mm)	1640*990*40
Front Glass Thickness (mm)	3.2
Surface Maximum Load Capacity	2400pa
Allowble Hail Load	23m/s,7.53g
Weight Per Piece (KG)	18.6
Junction Box Type	Pass The TUV Certificate
Bypass Diode Rating (A)	12
Cable & Connector Type	Pass The TUV Certificate
Frame (Material Corners,etc.)	40#
Backing (Brand Type)	TPT
Temperature Range	-40°C To +85°C
FF (%)	70-76%
Standard Test Conditions	AM1.5 1000W/m ² 25+/-°C

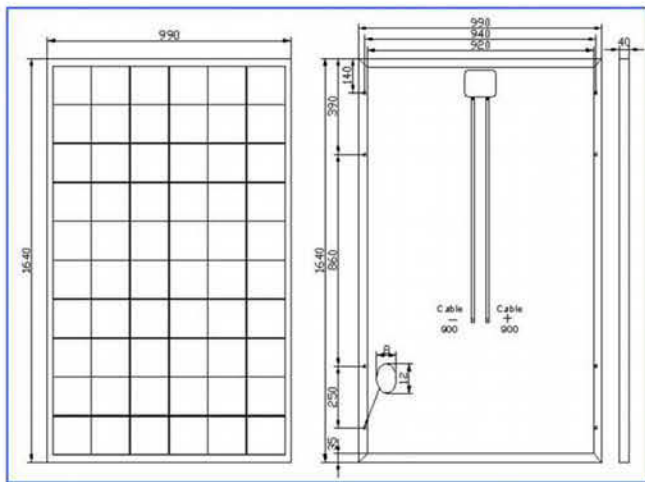
I-V Curves



Warranty & Certifications

Warranty	25 year limited power warranty 5 year limited power warranty
Certifications	IEC 61215,IEC61730,ETL-UL1703

Engineering Drawings



Packing

Packing	Plastic Protective Pack
1*20'	6 Pallets / 270pcs
1*40'HQ	13 Pallets / 676pcs



Project Picture



SL190CE-36M



SL190CE-36M

Electrical Data

Maximum Power (W)	190W
Optimum Power Voltage (Vmp)	38.16V
Optimum Operating Current (Imp)	4.98A
Open Circuit Voltage (Voc)	44.93V
Short Circuit Current (Isc)	5.33A
Cell Efficiency (%)	17.80%
Module Efficiency (%)	14.88%
Tolerance Wattage (e.g. +/-3%)	±3%
NOCT	47°C +/-2°C



SL190CE-36

Benefits

- ◆ High efficiency solar cells with high transmission and textured glass are delivering high efficiency for modules;
- ◆ Bypass diode minimizes the power drop caused by shade;
- ◆ Tempered glass, EVA resin, and weatherproof film, plus aluminum frame for extended outdoor use;
- ◆ Modules independently tested to ensure conformance with certification and regulatory standards;
- ◆ Manufacturing facility certified to ISO 9001 quality management system standards;

Temperature Coefficients

Temperature Coefficients of Isc (%)°C	+0.04
Temperature Coefficients of Voc (%)°C	-0.38
Temperature Coefficients of Pm (%)°C	-0.47
Temperature Coefficients of Im (%)°C	+0.04
Temperature Coefficients of Vm (%)°C	-0.38

Applications

- ◆ On - grid residential roof - tops
- ◆ On - grid commercial / industrial roof - tops
- ◆ Solar power stations
- ◆ Other on - grid applications

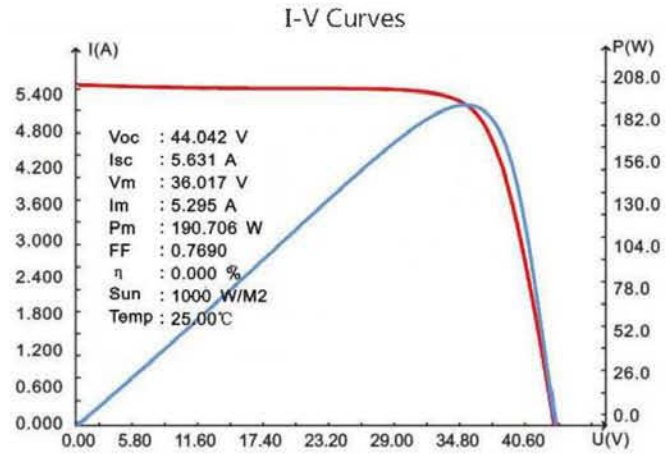




SL190CE - 36M

Components & Mechanical Date

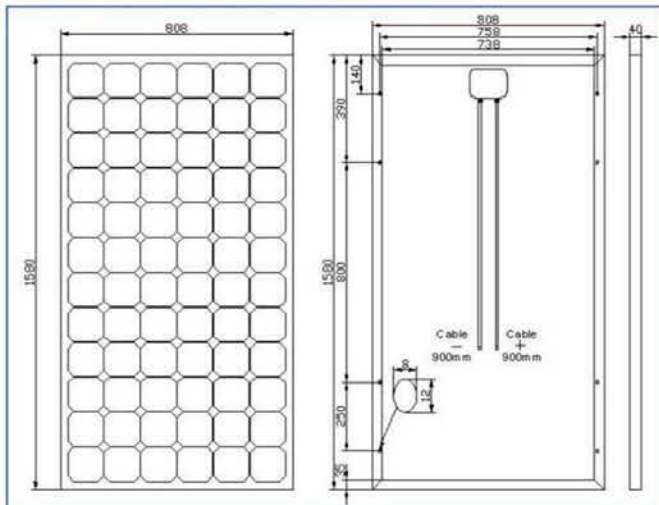
Solar Cell	125*125 Mono
Number Of Cell (pcs)	6*12
Size Of Module (mm)	1580*808*40
Front Glass Thickness (mm)	3.2
Surface Maximum Load Capacity	2400pa
Allowble Hail Load	23m/s,7.53g
Weight Per Piece (KG)	15
Junction Box Type	Pass The TUV Certificate
Bypass Diode Rating (A)	12
Cable & Connector Type	Pass The TUV Certificate
Frame (Material Corners,etc.)	40#
Backing (Brand Type)	TPT
Temperature Range	-40°C To +85°C
FF (%)	70-76%
Standard Test Conditions	AM1.5 1000W/m ² 25+/-°C



Warranty & Certifications

Warranty	25 year limited power warranty 5 year limited power warranty
Certifications	IEC 61215, IEC61730

Engineering Drawings



Packing

Packing	Wooden Box
1*20'	14 Pallets / 378pcs
1*40'HQ	28 Pallets / 756pcs





SL250CE-48M



SL250CE-48M

Electrical Data

Maximum Power (W)	250W
Optimum Power Voltage (Vmp)	50.78V
Optimum Operating Current (Imp)	4.92A
Open Circuit Voltage (Voc)	59.90V
Short Circuit Current (Isc)	5.26A
Cell Efficiency (%)	17.66%
Module Efficiency (%)	14.88%
Tolerance Wattage (e.g. +/-3%)	±3%
NOCT	47°C +/-2°C

Benefits

- ◆ High efficiency solar cells with high transmission and textured glass are delivering high efficiency for modules;
- ◆ Bypass diode minimizes the power drop caused by shade;
- ◆ Tempered glass, EVA resin, and weatherproof film, plus aluminum frame for extended outdoor use;
- ◆ Modules independently tested to ensure conformance with certification and regulatory standards;
- ◆ Manufacturing facility certified to ISO 9001 quality management system standards;



SL250CE-48M

Temperature Coefficients

Temperature Coefficients of Isc (%)/°C	+0.04
Temperature Coefficients of Voc (%)/°C	-0.38
Temperature Coefficients of Pm (%)/°C	-0.47
Temperature Coefficients of Im (%)/°C	+0.04
Temperature Coefficients of Vm (%)/°C	-0.38

Applications

- ◆ On - grid residential roof - tops
- ◆ On - grid commercial / industrial roof - tops
- ◆ Solar power stations
- ◆ Other on - grid applications

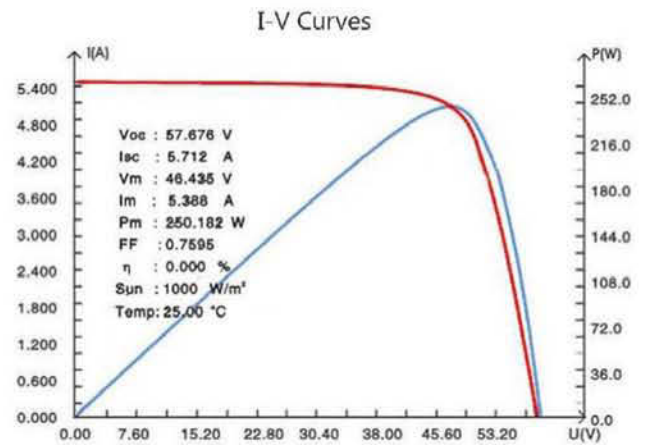




SL250CE - 48M

Components & Mechanical Date

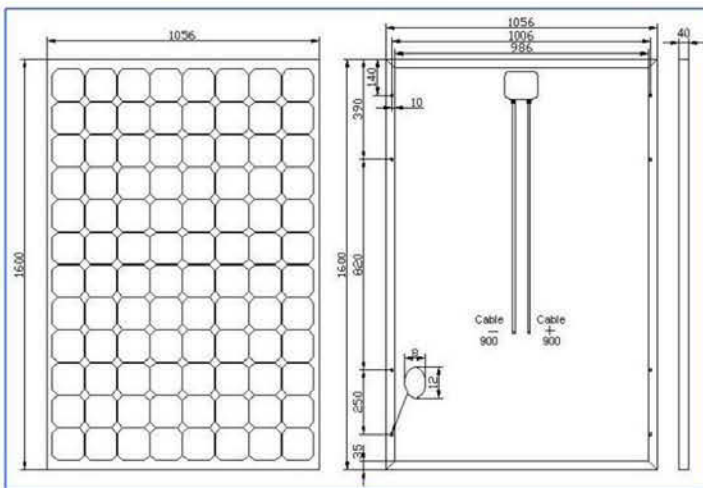
Solar Cell	125*125 Mono
Number Of Cell (pcs)	8*12
Size Of Module (mm)	1600*1056*40
Front Glass Thickness (mm)	3.2
Surface Maximum Load Capacity	2400pa
Allowble Hail Load	23m/s,7.53g
Weight Per Piece (KG)	19.5
Junction Box Type	Pass The TUV Certificate
Bypass Diode Rating (A)	12
Cable & Connector Type	Pass The TUV Certificate
Frame (Material Corners,etc.)	40#
Backing (Brand Type)	TPT
Temperature Range	-40°C To +85°C
FF (%)	70-76%
Standard Test Conditions	AM1.5 1000W/m ² 25+/-°C



Warranty & Certifications

Warranty	25 year limited power warranty 5 year limited power warranty
Certifications	IEC 61215, IEC61730, ETL-UL1703

Engineering Drawings



Packing

Packing	Plastic Protective Pack
1*20'	6 Pallets / 270pcs
1*40'HQ	14 Pallets / 728pcs



Project Picture

CUSTOMIZED & TECHNICAL SUPPORT



Customized

Hopergy research & design and manufacture of PV mountings to meet various of applications. With many years of OEM/ODM experience, we've set up unique processing procedures to ensure accurate design, prompt delivery, high-quality products and complete after-sales services. We also can offer customized solutions to suit for your special requirements. Please feel free to contact our sales team at info@hopergy.com.



Technical Support

Hopergy have one experienced research staff, engineers and multi-language sales team. We offer all customers technical support and service as below:

- ◆ Provide professional design proposal (Including mechanical calculation, assembly manual etc)
- ◆ Our professional design team offer technical advice and instruction
- ◆ Offering product knowledge and technique training regularly
- ◆ Provide personalized package solution
- ◆ Perfect logistics service ensure prompt delivery



WARRANTY DECLARATION

Scope of Warranty

Warranties and guarantees can only be claimed if the installation and commissioning of the photovoltaic system was done by professional personnel, as can be proved. We guarantee a 10 year warranty for the durability of all our Hopergy PV mounting products that are correctly mounted, installed and used.

Within the warranty period, Hopergy guarantees that we will replace or repair the defective components immediately. These are the exclusive and only services provides by Hopergy. The costs for examination and dismantling of the defective component, returning it to Hopergy and re-installation or compensation are excluded from this Warranty. The Warranty is only valid if the mounting system has been treated as recommended and/or remained in the photovoltaic system originally installed, or if the PV system has been verifiable dismantled company during a change of location and subsequently got reinstalled in a professional way.

The warranty period begins from the delivery or pick up date from Hopergy factory or warehouse. The replacement or repair of defective components does not extend the warranty period.

Exclusion of Warranty

Warranty and guarantee claims are not covered in case of

- ◆ unprofessional installation of the PV system
- ◆ improper use or inadmissible change of delivered components
- ◆ use of structurally untested and therefore unsuitable substructure for the module installation
- ◆ deviations of the installation from our installation manual
- ◆ disregard of damage caused by forces of nature, or other unforeseeable circumstances such as earthquakes, hurricanes, flooding, volcano eruptions, lightning stikes, snow damage, fires and explosions
- ◆ installation of defective components

No claims can be made if the damage is covered by insurance for storm damage and similar events(elementary insurance) or if this damage can normally be insured

On being replaced, components returned to Hopergy by customers become the property of Hopergy.

Warranty Claims

For warranty claims, the purchaser must prove that the mounting system's multi-function is exclusively the result of a defective component.

Any claims made for defective components must be made in writing within the warranty period. A copy of invoice should be enclosed with the notification of the claim.

The warranty covers neither the costs for returning components nor the costs for sending repaired or replaced components. Installation, dismantling, support or other consequential costs are excluded in all cases.



Xiamen Hopergy Photovoltaic Technology Co., Ltd

Address:NO.46 1A-4, HuLi Av.HuLi District,Xiamen,China

TEL:+86-592-5689685

FAX:+86-592-5638096

Website:www.hopergy.com

www.globalsources.com/hopergy.co