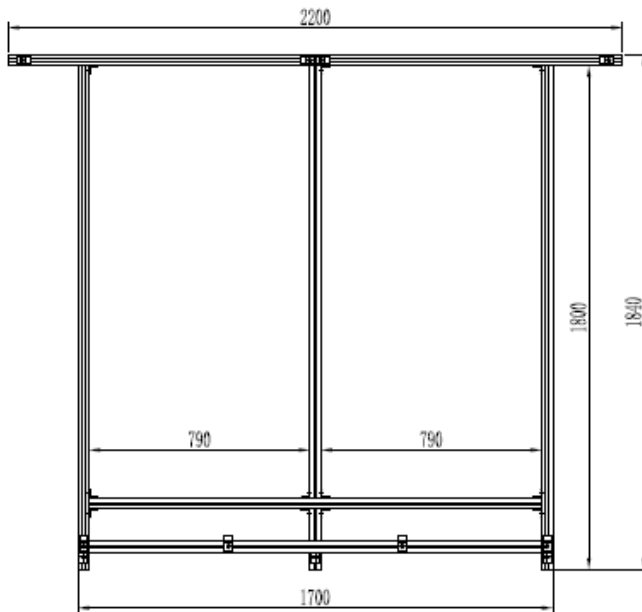


## **SR1301 – FPC1200-D 2 PANEL ROOF PITCHING KIT - 25°**

The Impact Solar Panel Roof Pitching Kit has been designed specifically for Australian conditions using high quality stainless steel and anodised aluminium components.

The SR1301 pitching kit utilises 40mm<sup>2</sup> anodised aluminium section quickly and easily assembled to securely mount 2 off FPC collectors. The pitching frame can then be secured to the roof using conventional approved mounting systems such as 65mm roof zip screws.

Assembly as per drawings and photographs below. Assembly can take place at ground level and then the frame can be moved to the rooftop using approved methods.



Front view of assembled panel mounting frame.

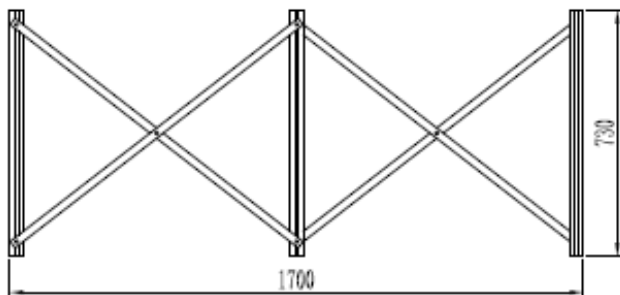
Note:

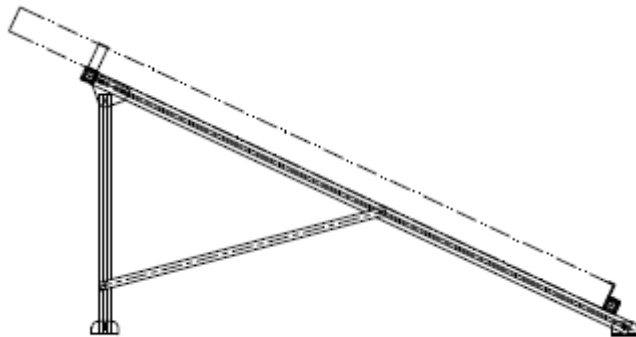
1. Panels are secured to frame using the 4 off 80mm z-brackets on the 2200mm top rail and 4 off 40mm z-brackets on the bottom rail (Fig 2, Fig 3)
2. The top rail is located at the ends of the three vertical supports and secured using 3 off angles and 6 T-bolts (Fig 2)
3. 2 mid-rails are provided and secured within the framework using 8 off angles and 16 off T-bolts (Fig 4)

Rear view of pitching frame.

Note:

1. 2 off 25mm T-bolts are used to join the cross-bracing in the centre
2. All other connections of the pitching frame are made with 15mm T-bolts provided.
3. This section is joined to the panel mounting frame when complete (Fig 6)





Side View of pitching frame.

Note:

1. The collector tops extend past the top of the pitching frame and are secured by 4 (2 off per panel) 80mm Z Brackets and 15mm T-bolts located on the top rail (Fig 2)
2. 6 off feet are supplied and secured to the anodised aluminium rail sections. (Fig 5)



Fig 1. Assembled frame



Fig 2. Top rail and 2 off 80mm panel supports (centre) fastened by T-bolts

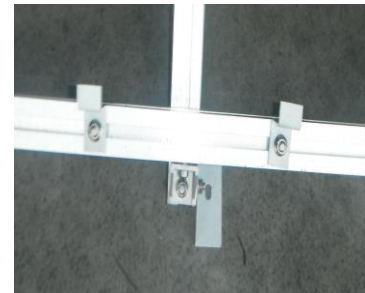


Fig 3. Bottom rail and 2 off 40mm panel supports

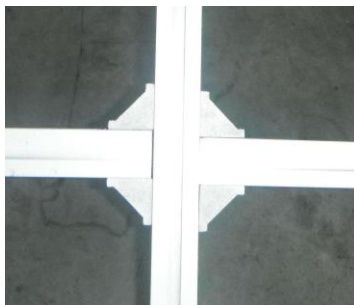


Fig 4. Mid supports fastened to mid- vertical riser using 8 off aluminium angles



Fig 5. 6 off anchoring feet are provided and secured to base of up-rights with 15mm T-bolts



Fig 6. Vertical pitching frame secures to panel mount frame using 3 off brackets supplied



**07 5370 6249**

Double check to ensure all T-bolts are fully tightened and the frame is ready to be mounted into position prior to installation of the collectors and plumbing.

Please note that this pitching frame system is not to be used in cyclone rated areas. The responsibility of correctly fastening the system to the roof structure remains with the installer who must be a fully authorised person.

For installation of the FPC1200-D collectors, please refer to Owner / Installer manual provided with the pump/controller or down-loadable from the Impact Solar website found at [www.impact solar.com.au](http://www.impact solar.com.au). This manual must be read in conjunction with the above assembly instructions and all provisions of this Owner / Installer manual apply to the entire plumbing installation including assembly of the pitching frame.

It is the responsibility of the installer to ensure compliance with all relevant building codes and regulations.

For any inquiries regarding this or any other SolarEast Australasia, please call 1300 668 886 or email [sales@impact solar.com.au](mailto:sales@impact solar.com.au).

Specifications and models may change without notice.

